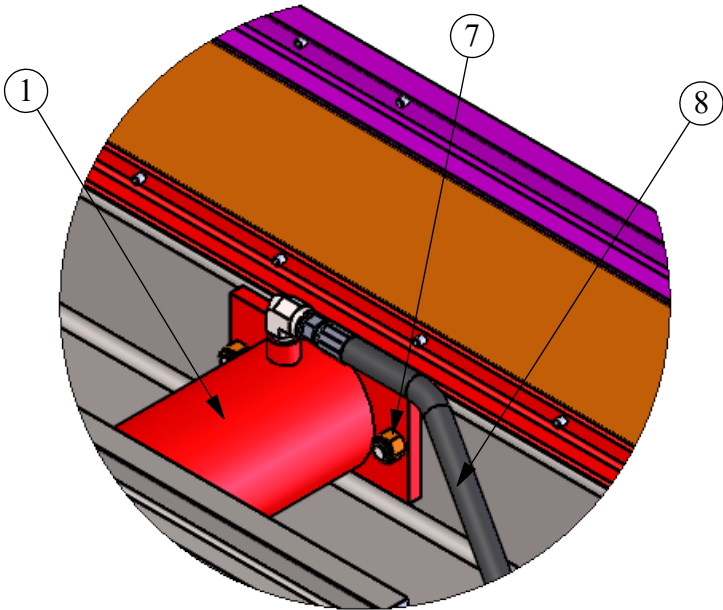
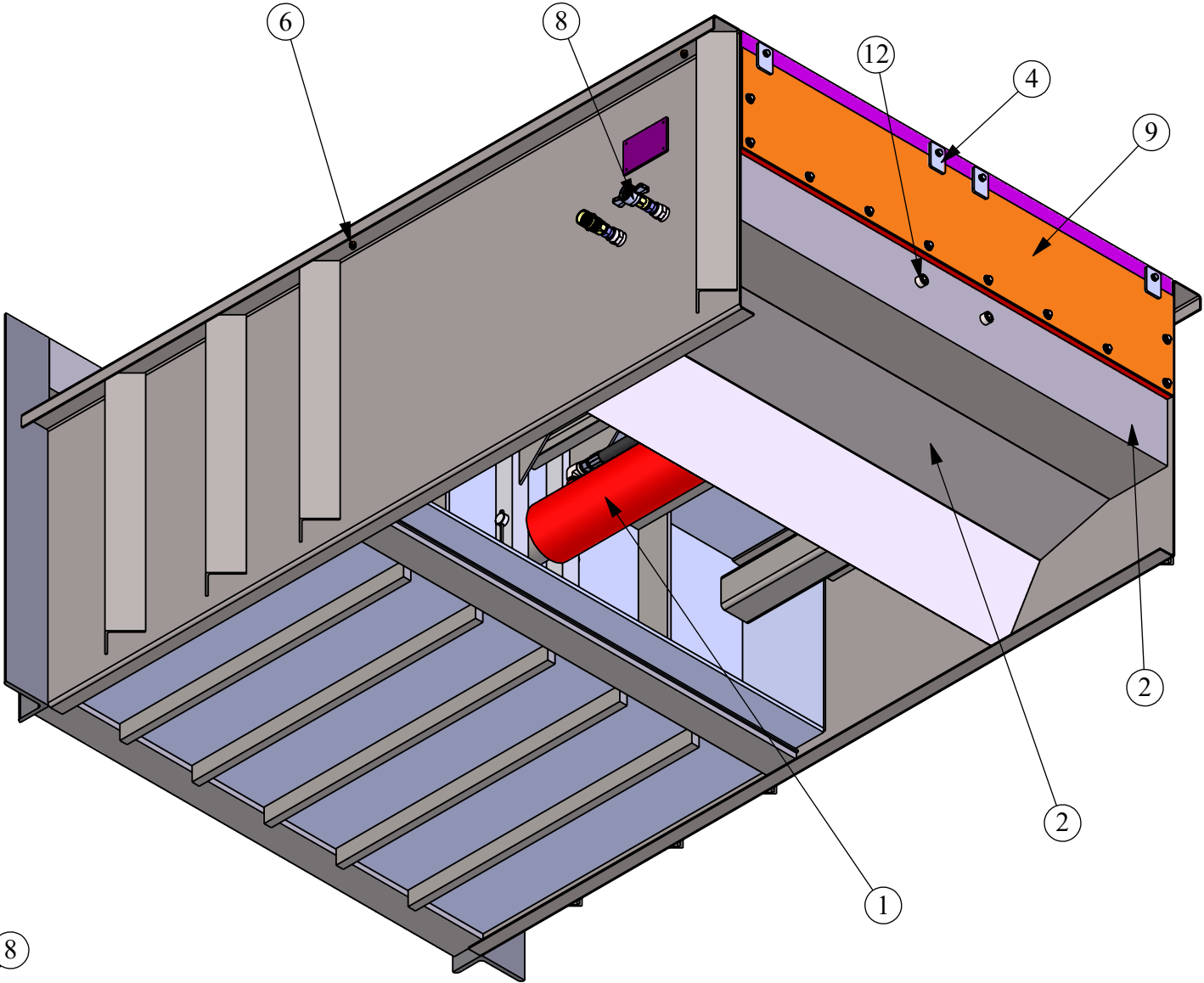
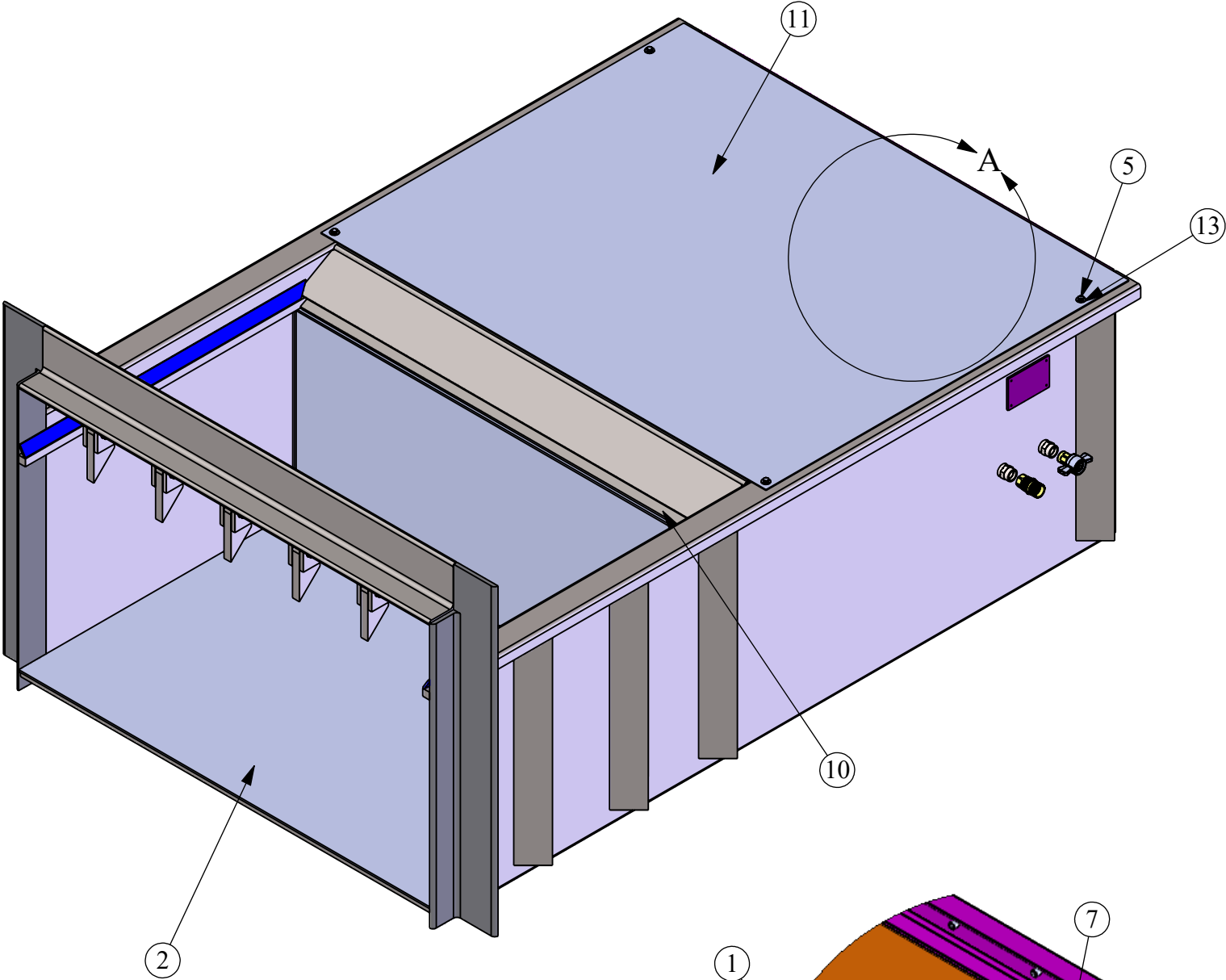


REVISIONS			
REV	DESCRIPTION	DATE	INITIALS
D	ADDED REAR SEALED COVER	2016-11-16	BD



DETAIL A  
SCALE 1 : 8

NOTE:  
THIS MACHINE HAS A PRESSURE  
SWITCH NOT A LIMIT SWITCH

NOTE:  
DRILL HOLES IN FRAME SIDES TO ATTACH FRAME DECK COVER WITH BOLTS

14		14	FWL06G8	WASHER LOCK .375 GRADE 8	GRADE 8	A
13		14	FWF06G8	WASHER FLAT .375 GRADE 8	GRADE 8	A
12		2	FBS12C20G8	SHCS .75-10 X 2.5 LG GRADE 8	GRADE 8	A
11		1	FDC-SC4260	SHEET .1196 (#11 GAUGE) X 53 X 65 ASTM A36 Steel - FRAME DECK COVER	ASTM A36 Steel	A
10	A	1	SAF3260-22	SCRAPER ASSEMBLY		B
9	A	1	SRCA-SC4260	SC4260 SEALED REAR COVER ASSEMBLY		A
8	A	1	PR-051809	PLUMBING RAM - SC4260-1-6 - LEFT HAND		D
7		2	FNN12CG8	NUT NYLON LOCK .75-10 GRADE 8	GRADE 8	A
6		4	FNN06CG8	NUT NYLON LOCK .375-16 GRADE 8	GRADE 8	A
5		18	FBH06C08G8	HHCS .375-16 X 1 LG GRADE 8	GRADE 8	A
4	M	4	F4660-13	BAR .25 X 2 X 3 REAR COVER TAB	ASTM A36 Steel	B
3	A	1	AR-SC4260-1-6	ASSEMBLY RAM - SC4260-1-6		A
2	A	1	AF-SC4260-1-6	ASSEMBLY FRAME SC4260-1-6		E
1	X	1	HCY6004645	6 BORE X 46 STROKE X 4.5 ROD X 56.75 COLLAPSED LENGTH		B
ITEM NO.	DWG	QTY	P/N	DESCRIPTION	MAT'L	REV

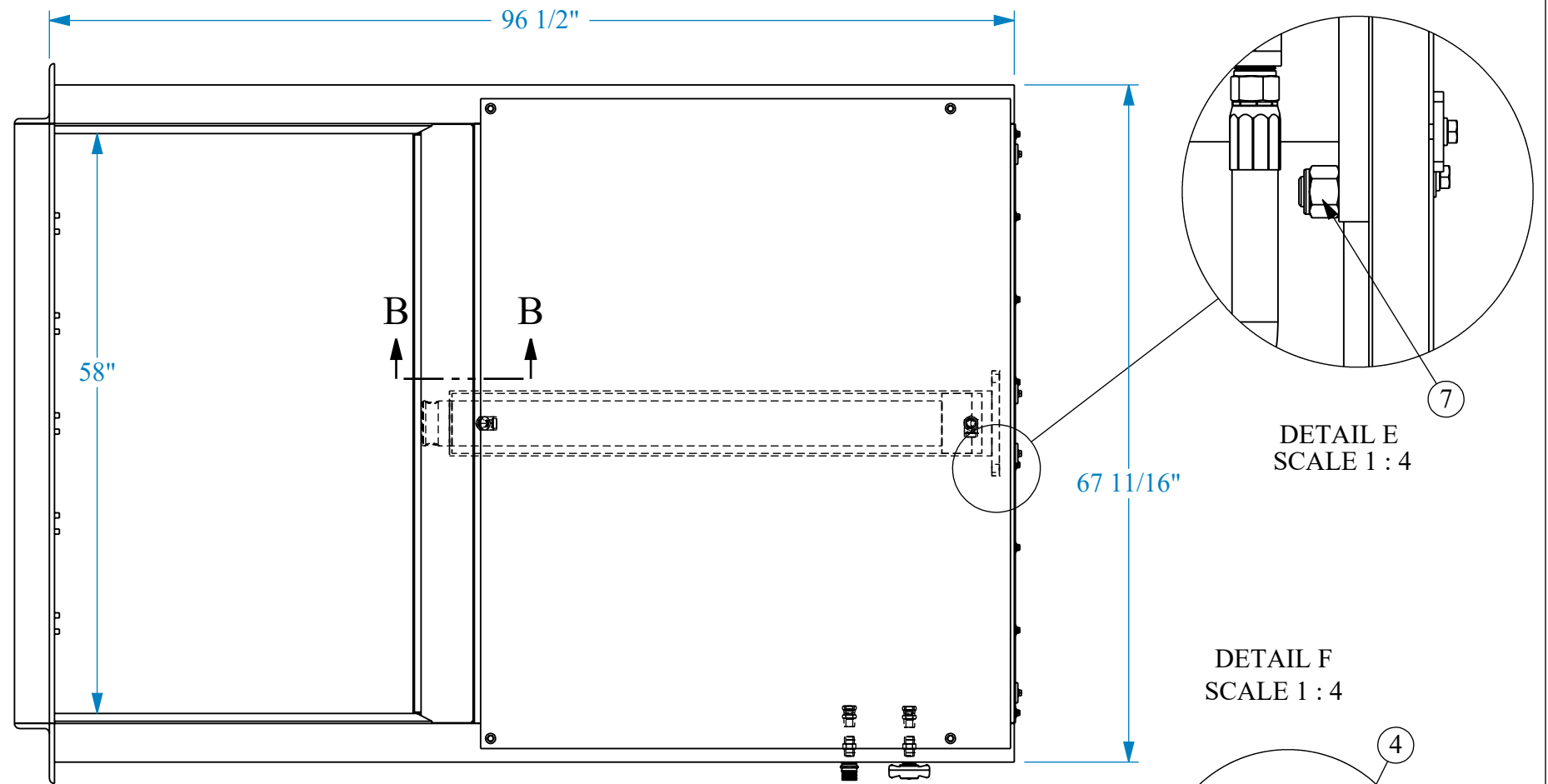
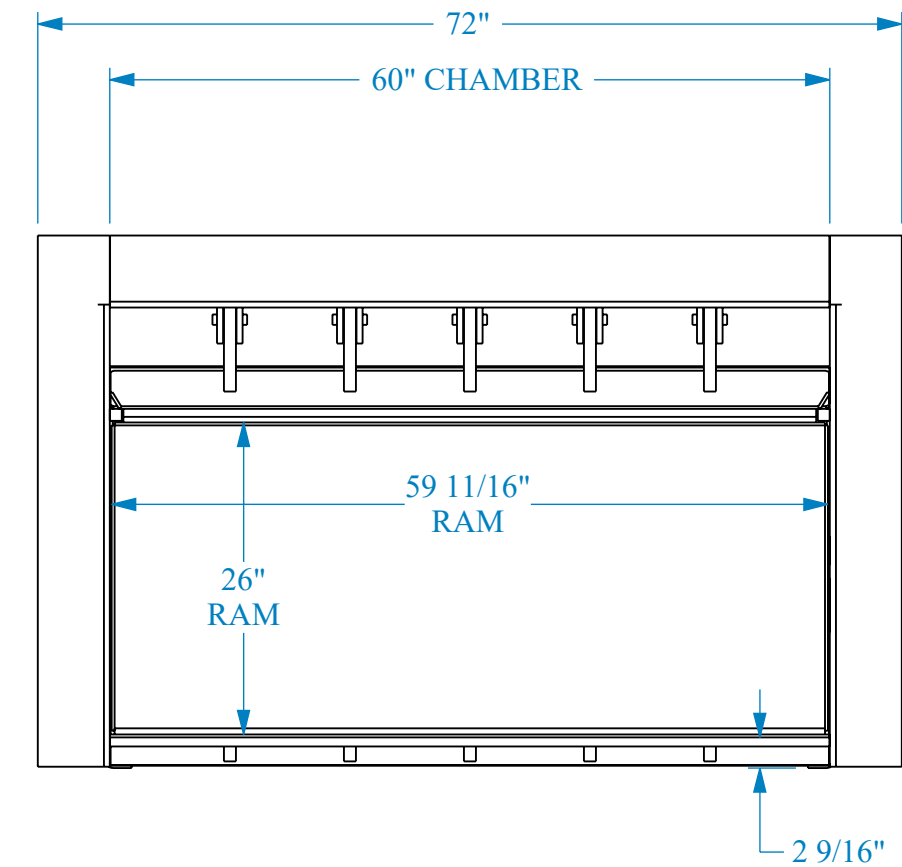
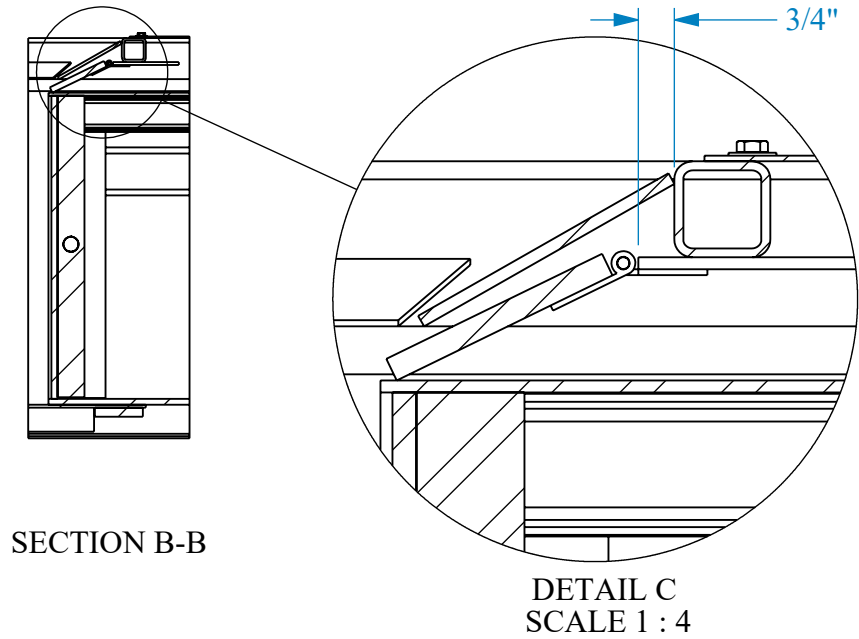
TITLE:  
**FINAL ASSEMBLY SC4260-1-6**

PRINTED DATE AND TIME: 2023-04-28 2:18:35 PM	DATE: 2005-06-23	REVISION: E	DRAWN BY: MW	SHEET 1 OF 2
DRAWING LEGEND - CONFIDENTIAL This drawing is the sole property of Sebright Products Inc. and embodies confidential proprietary information. All rights in this document and in the information contained herein are reserved by Sebright Products Inc. The document is provided for a specific purpose, and the document and the contents thereof may not be reproduced, used or disclosed to others for any other purpose without the express written consent of Sebright Products Inc. and the drawing must be returned to Sebright Products Inc. when the specific purpose is completed.				
TOLERANCE (UNLESS SPECIFIED): FRACTIONS ±1/16" XXXX ±.0625" ANGLES ±0°30'				

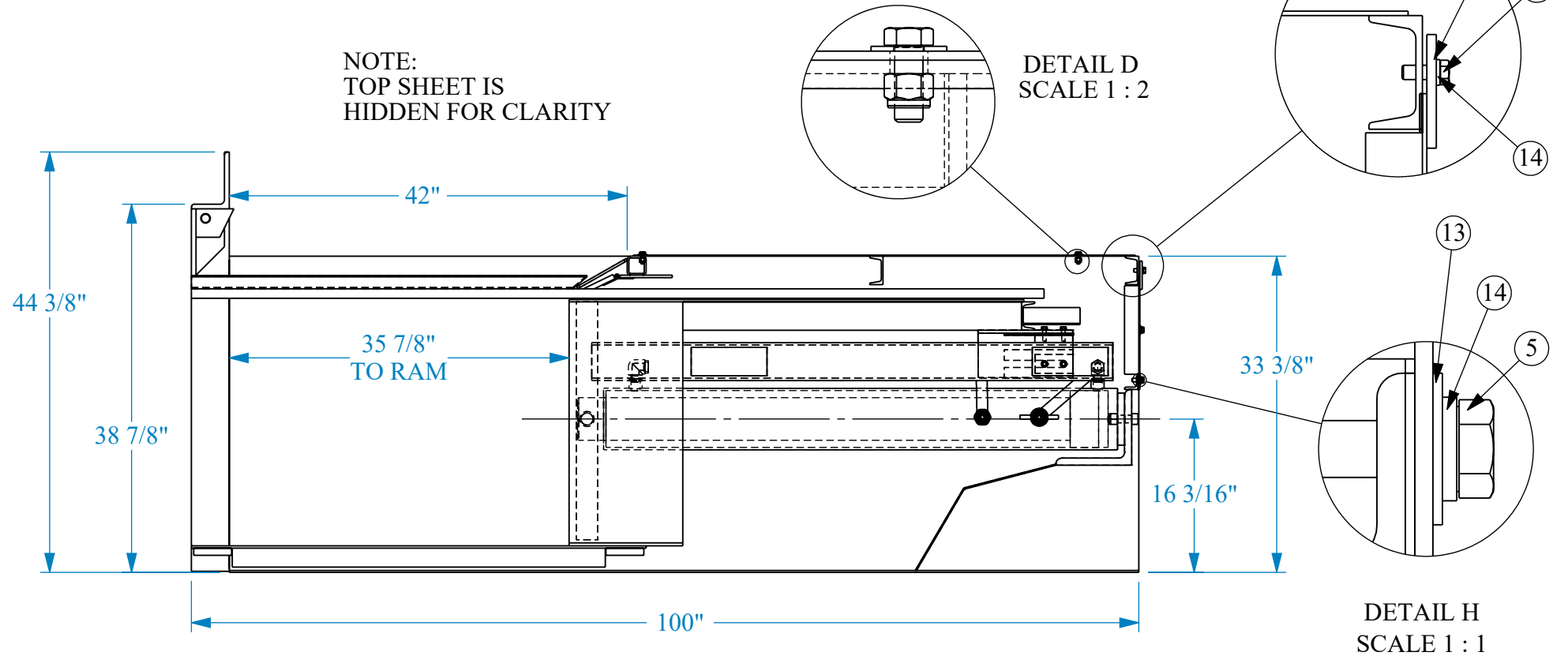
**SEBRIGHT PRODUCTS INC.**  
127 N. WATER ST. HOPKINS, MI 49328  
PH 269-793-7183 / www.sebrightproducts.com



CUSTOMER NAME:			
WEIGHT (LBS): 2900.36	SCALE: 1:16	SHEET SIZE: B	DWG #:
MATERIAL:	SER. NO.:	<b>FA-SC4260-1-6</b>	



NOTE:  
TOP SHEET IS  
HIDDEN FOR CLARITY



PRINTED DATE AND TIME: 2023-04-28 2:18:35 PM	DATE: 2005-06-23	REVISION: E	DRAWN BY: MW	SHEET 2 OF 2	TITLE: FINAL ASSEMBLY SC4260-1-6	CUSTOMER NAME:
DRAWING LEGEND - CONFIDENTIAL This drawing is the sole property of Sebright Products Inc., and embodies confidential proprietary information. All rights in this document and in the information contained herein are reserved by Sebright Products Inc. The document is provided for a specific purpose, and the document and the contents thereof may not be reproduced, used or disclosed to others for any other purpose without the express written consent of Sebright Products Inc. and the drawing must be returned to Sebright Products Inc. when the specific purpose is completed.					SEBRIGHT PRODUCTS INC. 127 N. WATER ST. HOPKINS, MI 49328 PH 269-793-7183 / www.sebrightproducts.com	WEIGHT (LBS): 2900.36
TOLERANCE (UNLESS SPECIFIED): FRACTIONS ±1/16" XXX ±.0625" ANGLES ±0°30'					SCALE: 1:16	SHEET SIZE: B
					SER. NO.:	DWG #: FA-SC4260-1-6